



FORD



FALCON



FAIRLANE



THUNDERBIRD

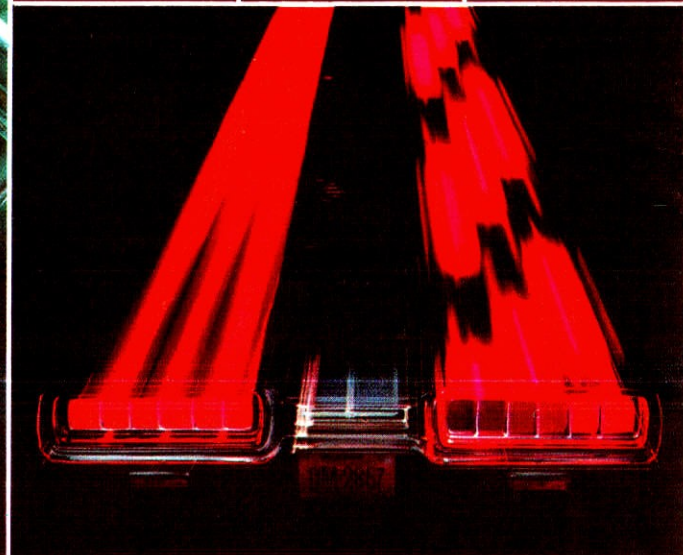
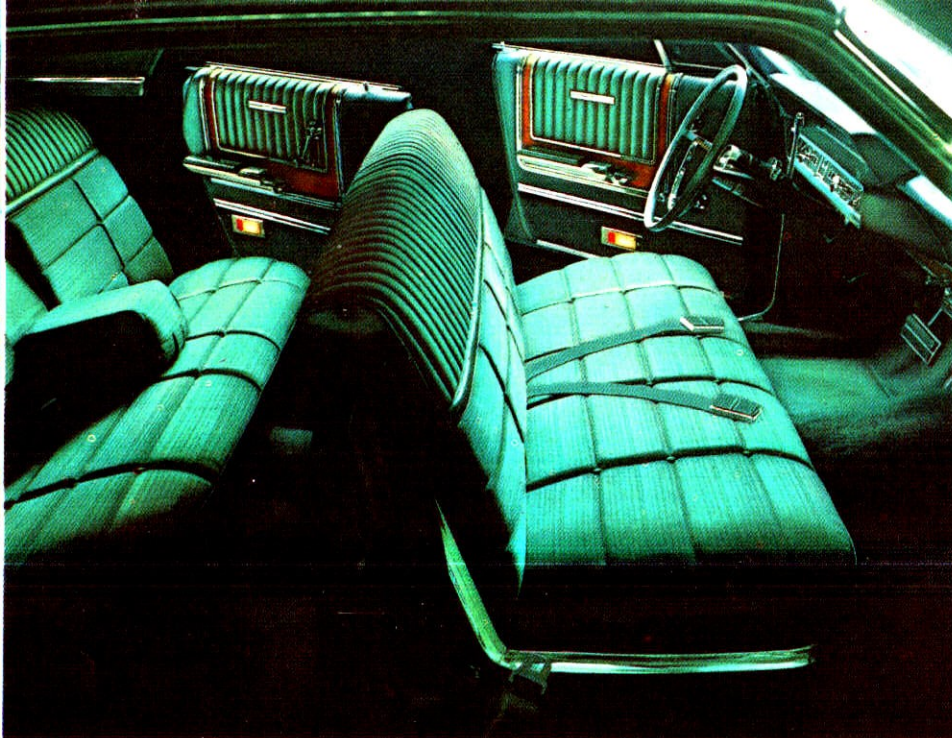
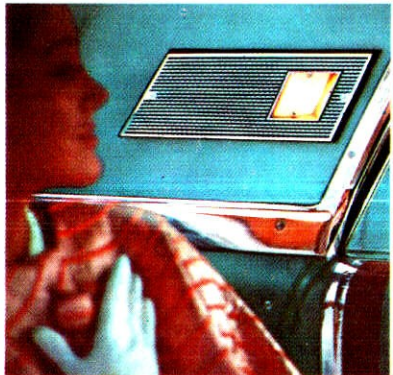


MUSTANG

The Five Different Total Performance Cars!

FORD 1965

MUSTANG • FALCON • FAIRLANE • FORD • THUNDERBIRD



New Mustang: Folding Rear Seat in New Fastback 2+2

New Mustang: Total Performance All Its Own!

25 New Total Performance Power Teams



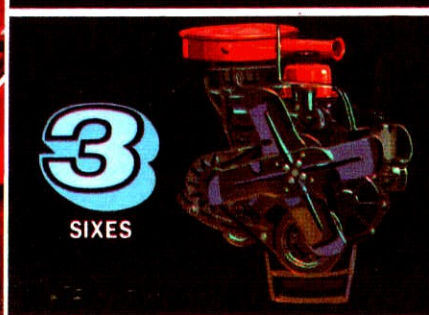
6

V-8's



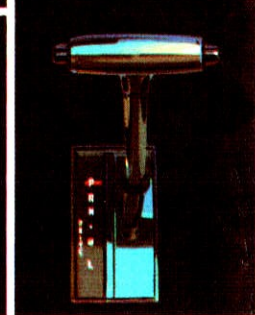
5

TRANSMISSIONS



3

SIXES



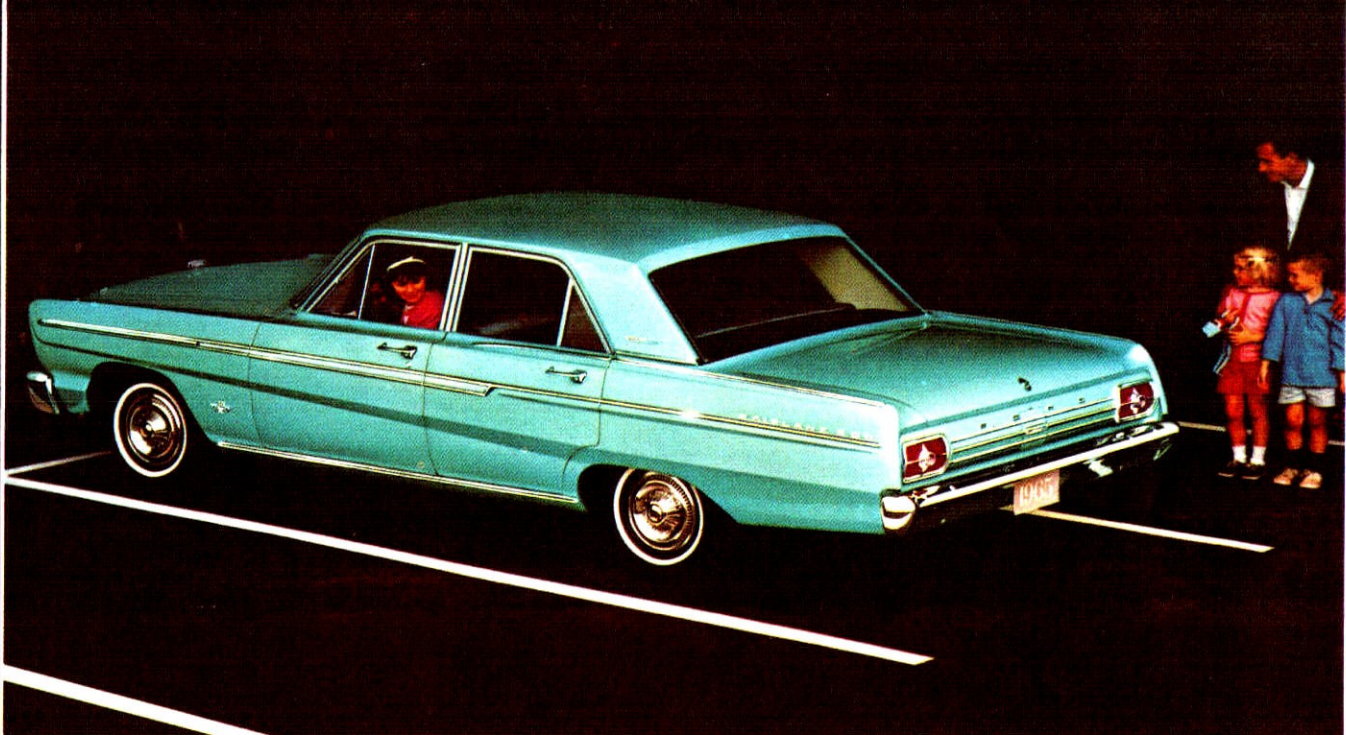
There Are 44 Reasons Why This Is The Best Year Yet To Go Ford!

Forty-four reasons—Ford's 44 new models—each with hundreds of reasons why your '65 car should be one of the new total performance cars! Here are the new car ideas to make headlines all through 1965! □ Ford leads off with the elegant new Galaxie 500 LTD's . . . with luxury totally new to Ford's field. A new Ford idea in closed-car, fresh-air

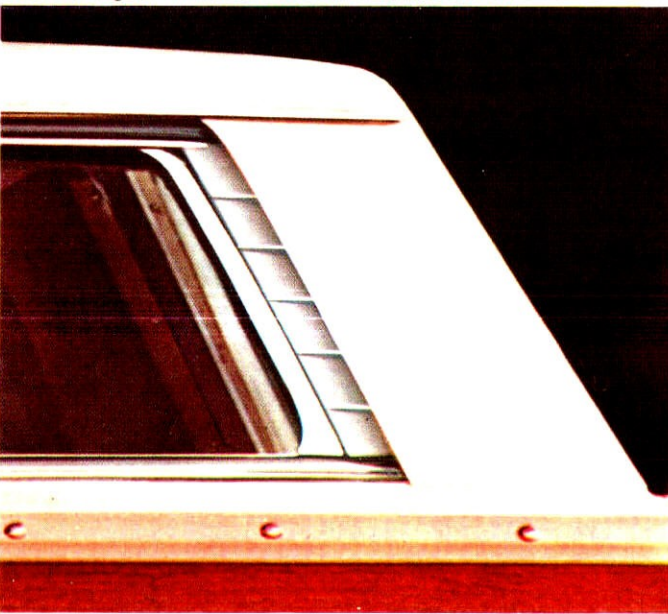
comfort: Silent-Flo Ventilation.* New Ford wagon ideas like built-in deflectors to air-clean rear windows and dual facing rear seats.† In every new Ford the ride is new . . . more controlled, solid and quiet than ever. □ Now there is a third new Mustang: Fastback 2+2. An aerodynamic honey, the 2+2 has the looks and action you'd



New Ford Wagons: Built-In Deflectors Air-Clean Rear Window



New Falcon: Up to 15% Greater Fuel Economy



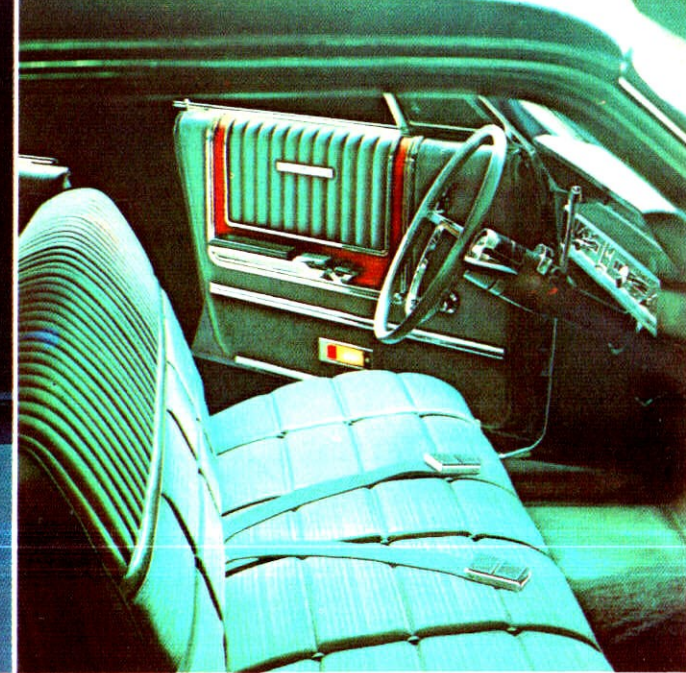
expect in a \$5,000 import. But the Ford idea includes this kind of luxury at a low Ford price, like the other Mustangs. □ **Fairlane** for '65 comes bigger, bolder, more beautiful . . . with new power, new performance and new features to make it an even better value. **Falcon**, the "savingest" compact, now boasts up to 15% greater fuel

economy with a standard 105-hp Six and optional new 3-speed Cruise-O-Matic! For the whole story, see page 10. □ In the private world of **Thunderbird** unique ideas are the hallmark. New for '65 are Sequential Turn Signals, front disc brakes, numerous refinements that put **Thunderbird** motoring in a class by itself. □ New engines—smoother, huskier

Sixes; quicker, quieter V-8 options. Nine engines (105-425 hp) . . . 5 transmissions . . . 25 total performance power teams in all. New service savings and economy. New convenience, comfort and quality. Reasons enough to test-drive total performance '65? See your Ford Dealer now. Find out firsthand . . . this is the best year yet to go Ford!



The Galaxie 500 LTD 2-Door Hardtop



Bigger, easier-loading Ford trunk



'65 FORDS:
Solid, Silent, Elegant

From elegant LTD's to value-packed Customs, '65 Fords are the newest, most-changed cars in a decade . . . the strongest, quickest, quietest Fords ever built! □ The LTD's—two new hardtops—join luxurious, bucket-seat XL's to head the '65 Line. In LTD's, elegance is standard. Seats are sofa-wide and soft; fabrics and appointments rival the most expensive cars. □ Equally luxurious is the new ride all total per-



Luxurious Galaxie 500/XL Convertible interior



The Galaxie 500/XL Convertible



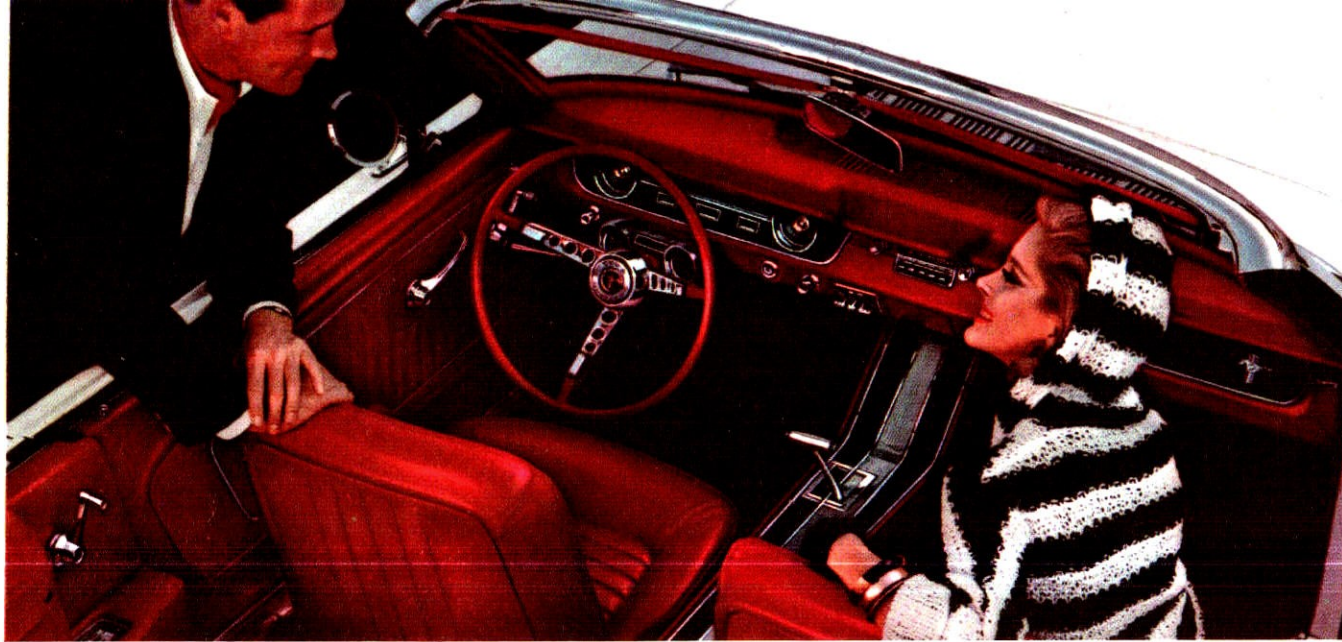
formance Fords share. All-new design makes it new in smoothness, quiet and control. Bodies are stronger. Frames "tune out" road shock, vibrations. Giant coil springs add softness. A wider-than-ever tread, new 15-inch wheels and low-profile tires all increase stability. □ Ford's new 240-cubic-inch Big Six is the biggest 6 for '65! It develops 150 hp, has seven main bearings for smoothness... hydraulic valve lifters for quietness.

(Options include 4 V-8's up to 425 hp, 3 drives headed by smooth, 3-speed Cruise-O-Matic.) □ Silent-Flo Ventilation*—fresh air with all windows closed. Glass rear windows in convertibles. An even more spacious (by 11%) trunk. Suspended accelerator pedal. Curved side glass. Battery-saving alternator. Twice-a-Year Maintenance (back cover) and complete quality. It all comes alive in a '65 Ford test drive!

*4-door hardtops

'65 FORD HIGHLIGHTS

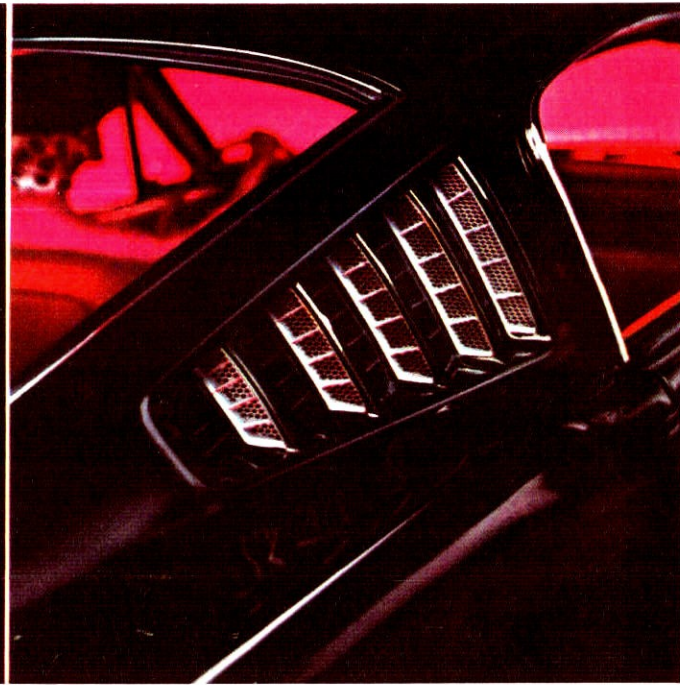
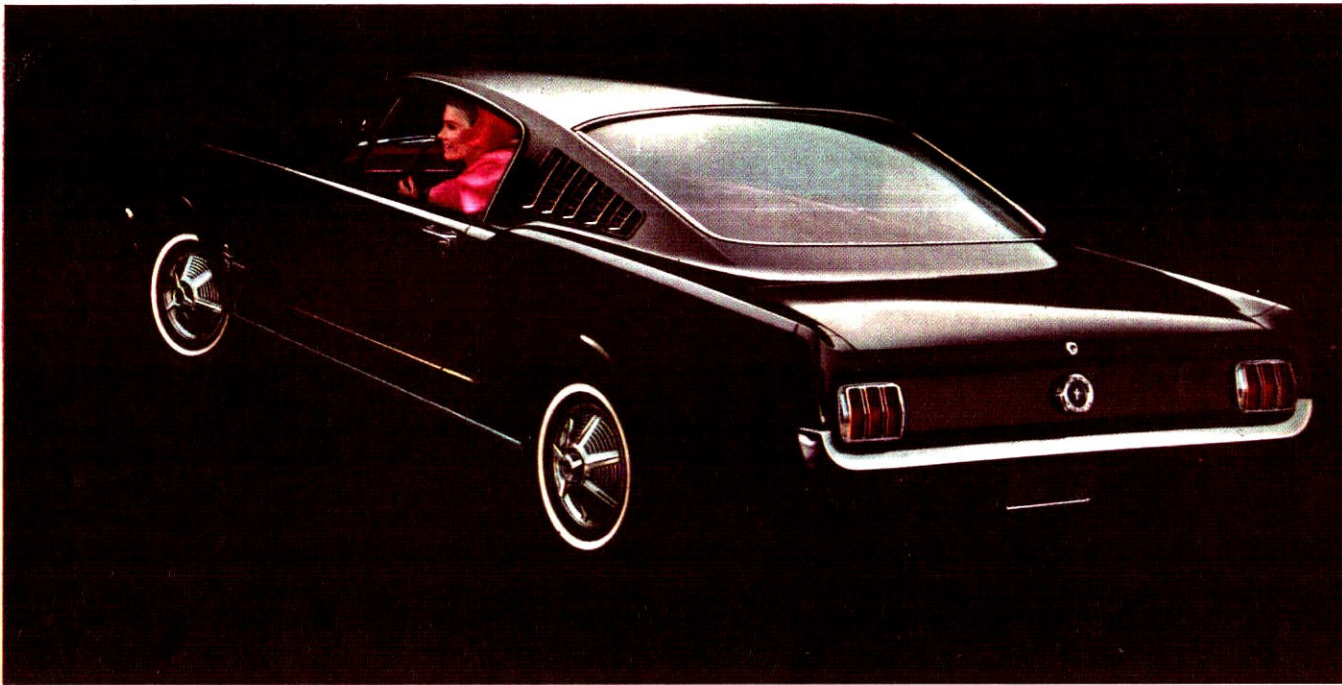
17 Models in 6 Series: 5 Sedans, 5 Hardtops, 2 Convertibles, 5 Wagons □ Wheelbase—119" □ Overall Length—210" □ Trunk Luggage Vol. (cu. ft.)—19.1 (Sedans, Hardtops) 18 (Convertibles) □ Std. Engine—195-hp Challenger V-8 (LTD's, XL's), Std. Engine—150-hp Big Six (all others) □ Std. Trans.—Cruise-O-Matic (LTD's, XL's) □ Std. Trans.—Synchro-Smooth Drive (fully sync. 3-Spd. Man.—all others) □ Options—4 V-8's (200-425 hp); 3 Trans. (Cruise-O-Matic, 4-Spd. Man., Overdrive)



Newest Mustang: the Fastback 2+2



Silent Flo Ventilation in Fastback 2+2



'65 MUSTANGS: *Now There Are Three*

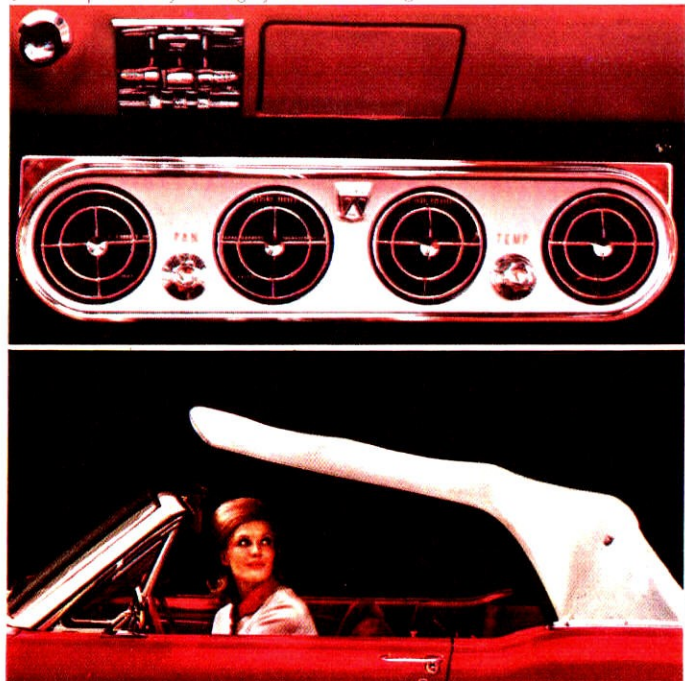
Hot on the heels of one of the most successful new car introductions of all time, Ford introduces a third Mustang—the Fastback 2+2! Just to look at this one is exciting! □ The 2+2 comes on bold with style you'd expect only from Europe and only at very high prices. But this one's a total performance Mustang, with the kind of low price Mustang's already famous for. □ Luxury equipment is standard. Silent-Flo

Ventilation draws in a stream of fresh air with all windows closed. (Stale air, tobacco smoke exit out the roof quarter vents.) The 2-passenger rear seat folds down into a 35 x 41-in. luggage platform, more than tripling luggage capacity! Big 10-sq. ft. rear window is tinted glass to reduce sun glare. The new Fastback 2+2 has all this going for it... and more! □ In Hardtop, Convertible or Fastback 2+2 the long list of



Over 70 options let you design your own Mustang

Mustang Convertible: sporty performance and a low price tag



standard equipment makes a Mustang even more tempting: new 120-hp Six, bucket seats, all-vinyl interior, full carpeting, floor-mounted shift, sports steering wheel, padded dash, courtesy lighting, full wheel covers . . . to name a few off the top. Mustang was designed to be designed by you. There are over 70 options you can choose to make your Mustang a personal luxury car . . . a spirited sports car . . .

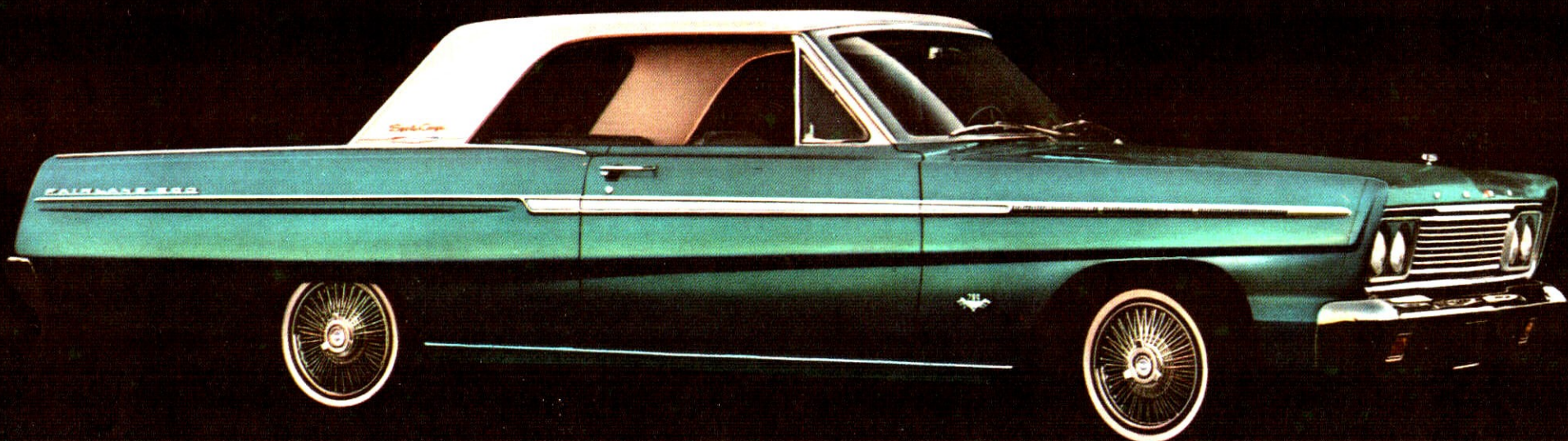
or anything in between. Sports options like: new front disc brakes, three hot V-8's (up to 271 hp), Rally Pac, 4-speed stick shift. Luxury options: air conditioner, power convertible top, T-bar Cruise-O-Matic, vinyl roof covering for the hardtop . . . so many more. Whether you want a fun car or family car (Mustang's great practicality lets you have the two in one), you owe yourself the fun of a Mustang test drive!

MUSTANG HIGHLIGHTS

3 Models: Hardtop, Convertible, Fastback 2+2 Wheelbase—108" Overall Length—181.6" Trunk Luggage Vol. (cu. ft.)—9 (Hardtop), 7.7 (Convertible), 5 (2+2) Std. Engine—120-hp (200 cu. in.) Six Std. Trans.—3-Spd. Manual (floor-mounted shift) Options—3 Challenger V-8's (200, 225 and 271 hp); 2 Trans. (Cruise-O-Matic, 4-Speed Manual)

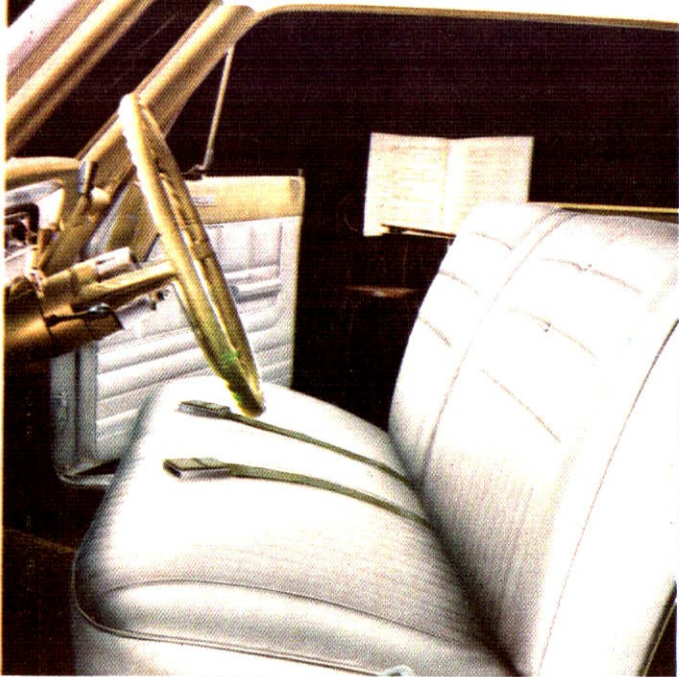


Fairlane 500 Sports Coupe

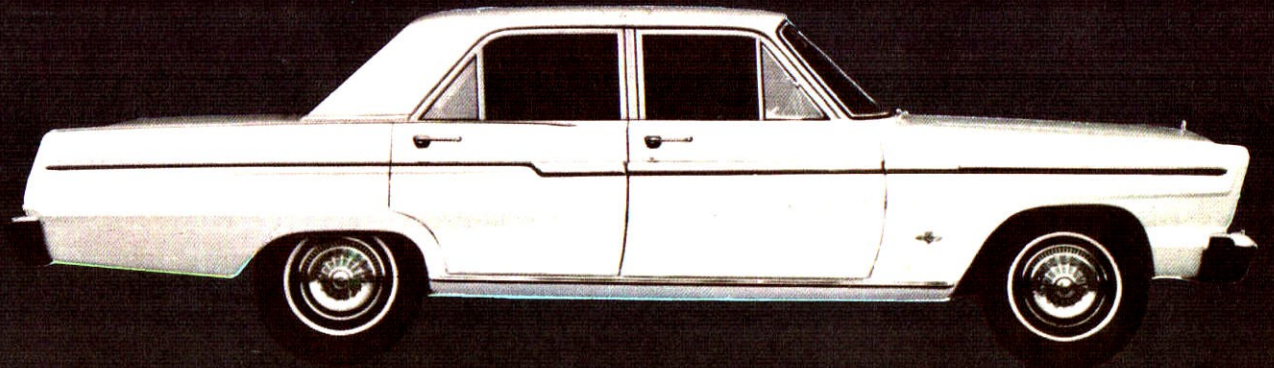


*'65 FAIRLANES:
Bigger, Bolder,
More Beauty, More Value*

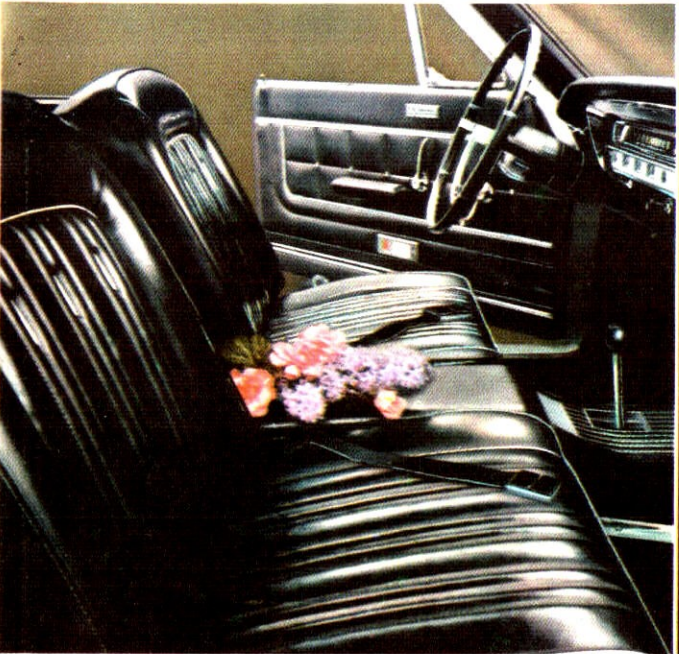
Drive any new total performance Fairlane and you'll quickly find a great deal more than the styling is new. □ For '65, the Fairlane formula of big-car comfort with nimble handling and luxury at low price includes more of everything that adds up to value. □ A new standard Six . . . 120-hp strong with the smoothness and quality of a 7-main-bearing crankshaft. Steering and braking effort are further reduced—the ride is



Sports Coupe bucket-seat interior



Fairlane 2-Door Sedan



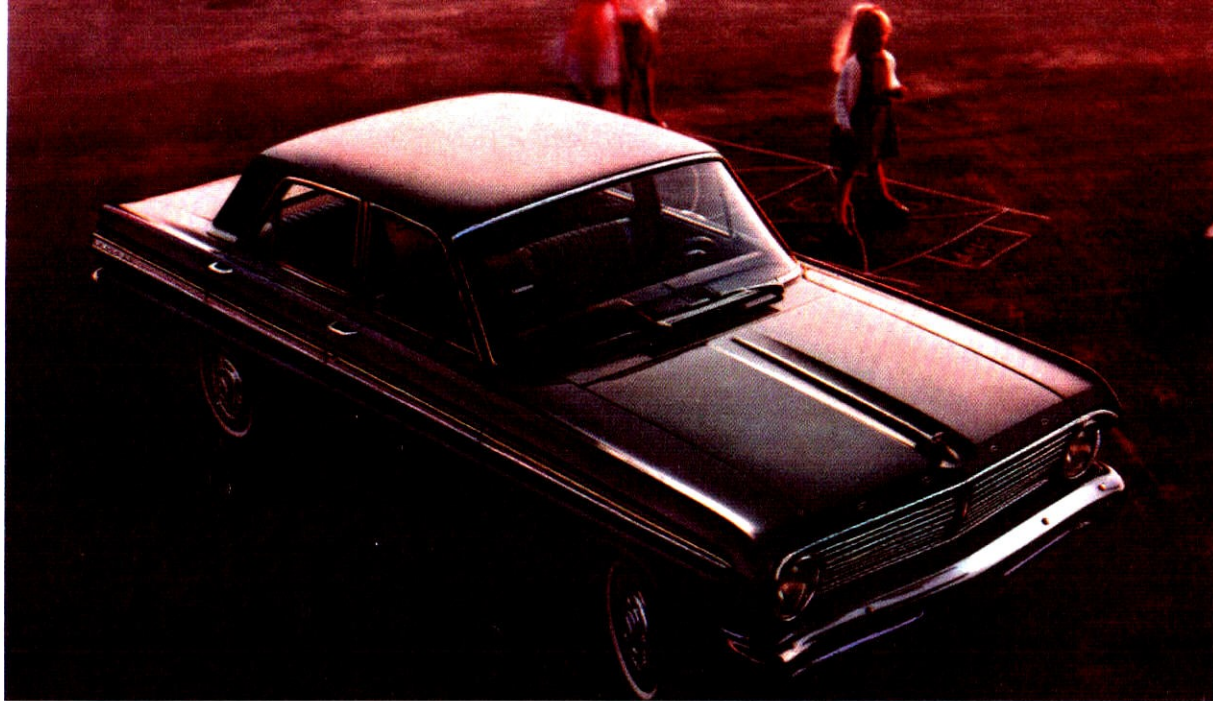
smoother and quieter! Trunk space has been increased 19%. There's a bigger V-8 (200 hp, one of three V-8 options). Famous 3-speed Cruise-O-Matic is now available with all engines; sporty 4-speed manual and gas-saving Overdrive options are also offered. New Fairlanes are just as luxurious inside as out. From bucket-seat Sports Coupe to budget-wise Fairlane 2-Door, upholsterys are new,

richer and softer. New smaller steering wheel lets the driver slip in and out more easily. Standard are smooth-running low-profile tires and automatic chokes on all engines.* And, as on all '65 Ford cars, new "Sta-Ful" battery and alternator take their place with the famous Ford service-saving and Twice-a-Year Maintenance features (see back cover). Try the medium-sized car that's different—'65 Fairlane!

*Except 271-hp V-8

'65 FAIRLANE HIGHLIGHTS

8 Models in 2 Series: 4 Sedans, 2 Hardtops, 2 Wagons (see pages 14-15) Wheelbase—116" Overall Length—198.4" Trunk Luggage Vol.—15 cu. ft. Std. Engine—120-hp Fairlane Six Std. Trans.—3-Spd. Manual Options—3 Challenger V-8's (200, 225 and 271 hp); 3 Transmissions (Cruise-O-Matic, 4-Speed Manual, Overdrive)



Futura Hardtop with vinyl roof covering†



*'65 FALCONS:
Up To 15%
Greater Fuel Economy*

For as great a gas-saver as Falcon has always been, up to 15% more can mean a lot of MPG! Here's how it happens: a new standard 105-hp Six is not only livelier but more efficient. (New valving makes it more "free-breathing.") In addition, optional new 3-speed Cruise-O-Matic uses the new Six's power more efficiently. It starts up more briskly; there's less power loss and more gas saved. □ You'll like driving a total



Falcon 2 Door Sedan



performance '65 Falcon for the fun as much as the savings. The ride is the plushiest among compacts — quiet, smooth, controlled. Handling is easier than ever. Manual steering effort is further reduced; power steering† takes less wheel turning, is faster, more precise. □ In other '65 Falcon power news: a 120-hp Six and new 200-hp V-8 are options. New 3-speed Cruise-O-Matic is available with all engines, a †Optional

4-speed stick shift with the V-8. □ New Falcons cover every choice in the compact world—from the Falcon 2-Door with a price tag among the lowest in America, to the Futura Hardtop with bucket seats†, air conditioner†, the works. Whatever your choice, you can count more savings in a new battery-saving alternator, Ford's famous Twice-a-Year Maintenance and service-saving features (see back cover).

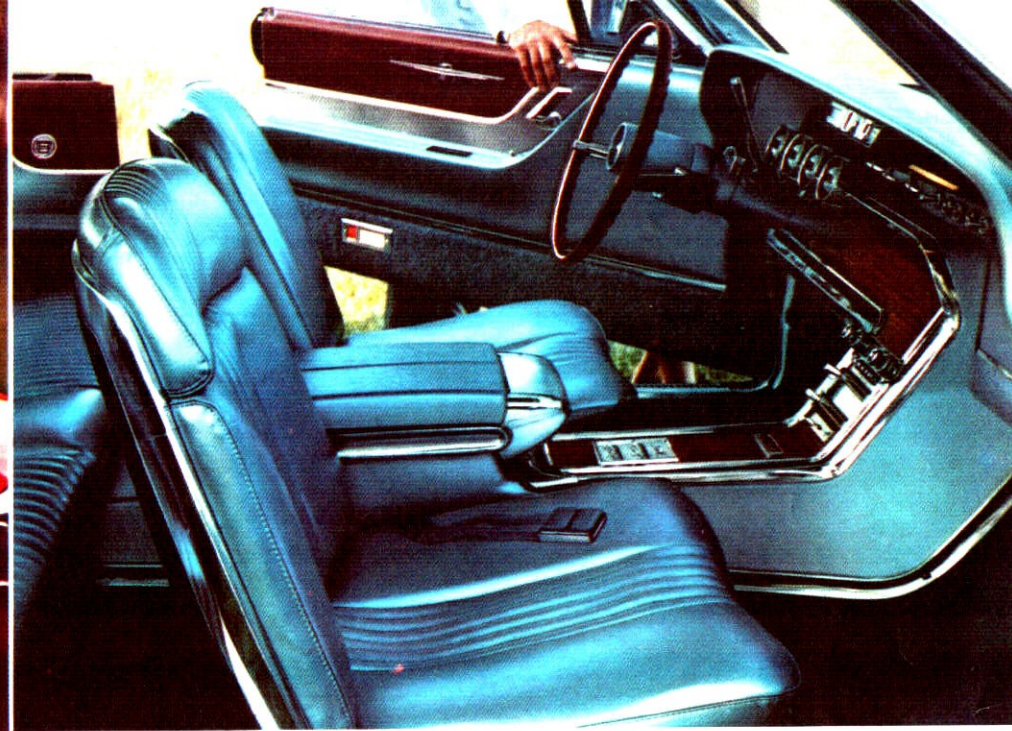
'65 FALCON HIGHLIGHTS

13 Models in 3 Series: 4 Sedans, 1 Hardtop, 1 Convertible, 7 Wagons (see pages 14-15) □ Wheelbase—109.5" □ Overall Length—181.6" □ Trunk Luggage Vol. (cu. ft.)—12.2 (Sedans, Hardtop), 9.1 (Convertible) □ Std. Engine—105-hp Falcon Six □ Std. Trans.—3-Speed Manual □ Options—120-hp Fairlane Six, 200-hp Challenger V-8; Cruise-O-Matic, 4-Speed Manual



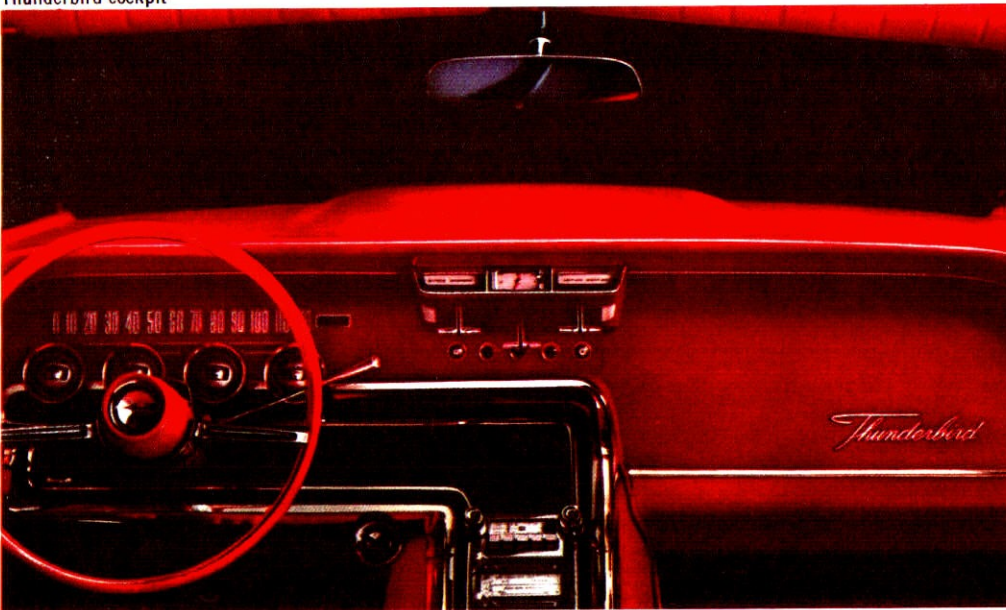
*The Private World
of Thunderbird for 1965*

Is this the year you make the private world of Thunderbird part of your own? There never was a better time. Thunderbird for '65 is unique—new in ways other cars will not be for years. Examples: new Sequential Turn Signals to point out your turn with a rippling flow of light. Silent-Flo Ventilation* to let you enjoy the freshest air in closed-car quiet. Swing-Away Wheel that moves aside to help you in or out. A



Thunderbird cockpit

Thunderbird Landau



Convertible which tucks away its own top without a trace of how it's done. Slip into the driver's seat. In Thunderbird's cockpit, aircraft instrumentation places controls fingertip-close. Shell-contour seats in front—uniquely covered rear seat—are comfort supreme. Out on the road, it's just you and Thunderbird. Miles fall away in effortless quiet. The power team is flawless: 300-hp Thunderbird

Special V-8 and Cruise-O-Matic Drive. New front disc brakes act with increased smoothness, fade-resistance. (Power steering, power brakes . . . even the radio is standard.) Sample Thunderbird's private world today. Its unique pleasures are matched only by the pride you can take in making one of motoring's finest investments. It's a gilt-edged investment in pure driving pleasure unmatched by any other car.

'65 THUNDERBIRD HIGHLIGHTS

- 3 Models: Hardtop, Convertible, Landau Wheelbase—113"
 Overall Length—205.4" Trunk Luggage Vol. (cu. ft.)—11.5 (Hardtop, Landau), 6.1 (Convertible) Standard Equipment—300-hp Thunderbird Special V-8 Cruise-O-Matic Drive Power Steering Power Brakes (disc front wheel brakes) Swing-Away Steering Wheel Silent-Flo Ventilation* Sequential Turn Signals Shell-Contour Front Seats



Country Squire interior

Ford Country Squire

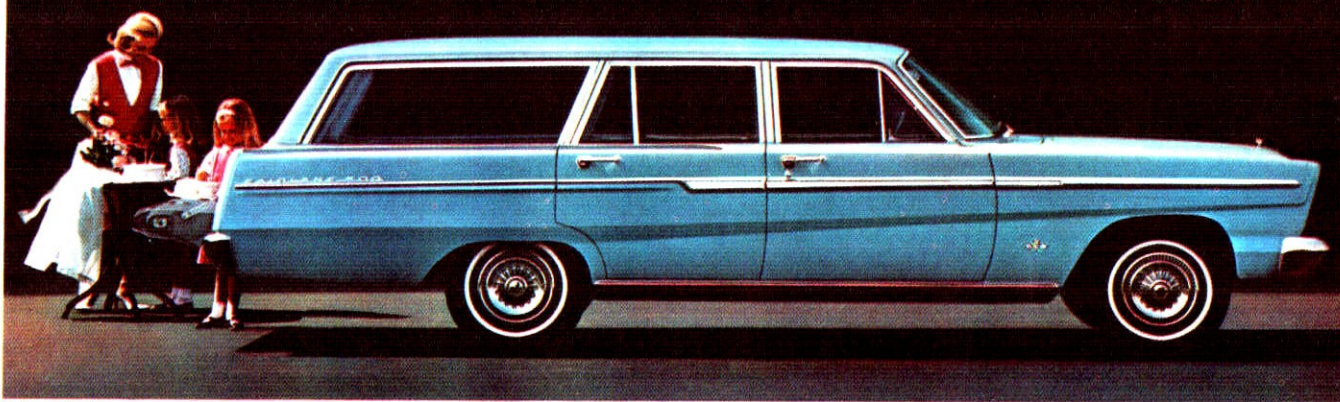
Ford's Dual Facing Rear Seats



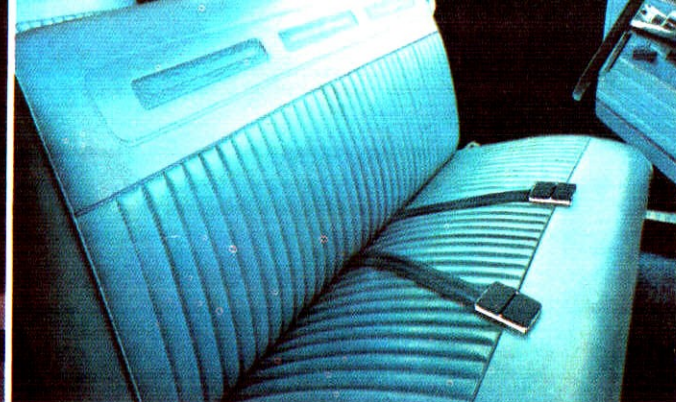
*A Whole New
World of
WAGONS for 1965!*

For '65, America's station wagon specialist offers 14 "champions of inner space." New wagons from Ford come bigger, handsomer, more versatile, more useful and in greater variety than ever! Which one's for you? Take them from the top. Now you can choose from five full-size **Fords**. An all-new, low-priced Ranch Wagon takes its place alongside the equally new Country Sedans and Country Squires. Bigger inside,

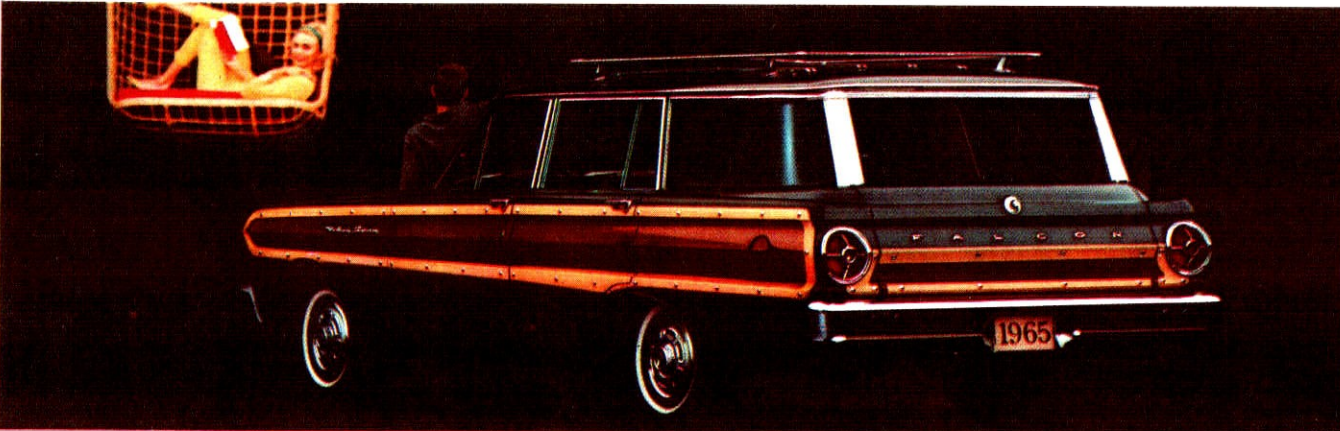
4 x 8-ft. plywood panels can lay flat on the load floor. Here are all the features of other '65 Fords, including that luxurious ride. Here, too, are "strictly wagon" ideas—built-in air deflectors that help keep the rear window clean; models with dual facing rear seats which provide room for a family of 10! The new quick, smooth Big Six (150 hp) is standard; three V-8 options go to 300 hp. **Fairlane** wagons have all-new



Falcon Squire



Falcon Squire interior



Falcon Futura 4-Door Wagon



Falcon Deluxe Club Wagon



looks outside, new rich all-vinyl trims inside. Standard is a thrifty, thrifty new 120-hp Six; two new V-8 options deliver up to 225 hp! A third seat option boosts capacity to eight. □ In compact wagons, the '65 Falcons come in seven models—from lowest-priced Falcon 2-Door to smart Falcon Squire to the "take-all-loads" threesome, Falcon Club Wagons. New standard Sixes—up to 120 hp. New options—150-hp Big Six

in Club Wagons, 200-hp V-8 in all other wagons. And no wagons were ever as much fun or as economical to drive as these Falcons! □ New "Sta-Ful" batteries, new battery-saving alternators . . . Ford's famous Twice-a-Year Maintenance and service-saving features. These and many more you'll find when you test-drive any one of the 14 new total performance wagons from Ford.

'65 WAGON HIGHLIGHTS

14 Models in 4 Sizes □ Length (wheelbase/overall): Ford 119/210"; Fairlane 116/203.2"; Falcon 109.5/190"; Club Wagons 90/168.3" □ Cargo Vol. (cu. ft.): Ford 103.3* (6-Pass.), 99.3* (dual facing rear seat models); Fairlane 98.6*; Falcon 77.9; Club Wagons 194. Engine HP (std./top opt.): Ford 150/300; Fairlane 120/225; Falcon 105 & 120/200; Club Wagons 105/150. *Including 12, 8 and 6.7 cu. ft. respectively in below-floor compartments.

44 New Total Performance Models for '65

Check off your choice here, then see your Ford Dealer for a Total Performance Test Drive!

17 NEW FORDS

Galaxie 500 LTD □ 2-Door Hardtop □ 4-Door Hardtop. **Galaxie 500/XL** □ 2-Door Hardtop □ Convertible. **Galaxie 500** □ 2-Door Hardtop □ 4-Door Hardtop □ Convertible □ 4-Door Sedan. **Custom 500** □ 2-Door Sedan □ 4-Door Sedan. **Custom** □ 2-Door Sedan □ 4-Door Sedan. **Wagons*** □ Ranch Wagon □ Country Sedan □ Country Sedan with Dual Facing Rear Seats □ Country Squire □ Country Squire with Dual Facing Rear Seats.

*6-passenger. Up to 10 passengers in dual facing rear seat models

3 NEW MUSTANGS

□ Hardtop □ Convertible □ Fastback 2+2.

8 NEW FAIRLANES

Fairlane 500 □ 2-Door Sports Coupe □ 2-Door Hardtop □ 2-Door Sedan □ 4-Door Sedan. **Fairlane** □ 2-Door Sedan □ 4-Door Sedan. **Wagons*** □ Fairlane Wagon □ Fairlane 500 Wagon.

*6-passenger. Up to 8 passengers with optional rear-facing third seat

13 NEW FALCONS

Futura □ 2-Door Hardtop □ Convertible □ 2-Door Sedan □ 4-Door Sedan. **Falcon** □ 2-Door Sedan □ 4-Door Sedan. **Wagons*** □ 2-Door Falcon Wagon □ 4-Door Falcon Wagon □ Falcon Futura Wagon □ Falcon Squire Wagon. **Club Wagons†** □ Station Bus □ Club Wagon □ Deluxe Club Wagon.

*6-passenger

†Up to 8 passengers with options: 3-pass. 2nd seat or 3-pass. 2nd and 3rd seats

3 NEW THUNDERBIRDS

□ Hardtop □ Landau □ Convertible.

TWICE-A-YEAR MAINTENANCE

The new total performance cars from Ford are designed to go 6,000 miles (or 6 months) between oil changes and minor chassis lubrications; 36,000 miles (or 3 years,* whichever comes first) between major chassis lubes. Other '65 service-savers include: 36,000-mile (or 2-year) engine coolant-antifreeze, self-adjusting brakes, long-life Sta-Ful battery, sealed alternator, rust- and corrosion-resistant aluminized muffler and galvanized underbody parts. Every new car built by Ford needs so little service it's just good sense to see that it gets the best—at your Ford Dealer's. His factory-trained mechanics and special tools add up to a great service combination you can get nowhere else!

*Except Falcon Club Wagons each 6,000 miles or 6 mos., Thunderbird each 100,000 miles or 3 yrs.

PRICES: Front seat belts, heater and defroster are included as standard equipment on all models. However, heater and/or seat belts may be deleted (except for Thunderbird) on car order if desired at an appropriate price reduction. All power assists, optional equipment and accessories as well as some items illustrated or referred to as options, optional or available are at extra cost. For the price of the Mustang, Falcon, Fairlane, Ford or Thunderbird with the equipment you desire, consult your Ford Dealer.

Comparative information in this folder was obtained from authoritative sources, but is not guaranteed. The specifications contained herein were in effect at the time of approval for printing. Ford Division of Ford Motor Company reserves the right to discontinue models at any time, or change prices, specifications or designs without notice and without incurring obligation.

CAR LINE	ENGINE	HORSE-POWER	DISPL. CU. IN.	COMP. RATIO	CARB. & FUEL	TRANSMISSION OPTIONS				AVAILABLE WITH MODELS (note exceptions)
						CLUB WAGONS	WAGONS	LTD & XL	OTHER MODELS	
MUSTANG	Six (standard)	120	200	9.2	IV Reg.				A*-C-D	All Models
	Challenger V-8	200	289	9.3	2V Reg.				B-C-D	
	Challenger Special V-8	225	289	10.0	4V Prem.				B-C-D	
	Challenger Hi-Perf. V-8	271	289	10.5	4V SP				D	
FALCON	Falcon Six (standard)	105	170	9.1	IV Reg.	B*-C	A*-C		A*-C	Std. all except Futura and Squire Wagons
	Fairlane Six (standard)	120	200	9.2	IV Reg.		A*-C		A-C	Std. Futura and Squire Wagons, opt. others
	Big Six	150	240	9.2	IV Reg.	B				Club Wagons
	Challenger V-8	200	289	9.3	2V Reg.		B-C		B-C-D	All except Club Wagons
FAIRLANE	Fairlane Six (standard)	120	200	9.2	IV Reg.		A*-C		A*-C	All Models
	Challenger V-8	200	289	9.3	2V Reg.		B-C-E		B-C-E	
	Challenger Special V-8	225	289	10.0	4V Prem.		B-C		B-C-D	
	Challenger Hi-Perf. V-8	271	289	10.5	4V SP				C-D	
FORD	Big Six (standard)	150	240	9.2	IV Reg.		B*-C-E		B*-C-E	Std. all except Gal. 500 LTD's and XL's
	Challenger V-8 (standard)	200	289	9.3	2V Reg.		B-C-E	C*	B-C-E	Std. Gal. 500 LTD's and XL's, opt. others
	Thunderbird V-8	250	352	9.3	4V Reg.		B-C	C	B-C	All Models
	Thunderbird Special V-8	300	390	10.1	4V Prem.		B-C-E	C-D	B-C-D-E	All Models
	Thunderbird Hi-Perf. V-8	425	427	11.1	8V SP			D	D	All except Wagons
T-BIRD	Thunderbird Special V-8 (standard)	300	390	10.1	4V Prem.				C*	All Models

Transmission Key: A—3-Speed Manual (sync. 2nd and 3rd gears) B—Synchro-Smooth Drive (fully sync. 3-spd. manual) C—Cruise-O-Matic Drive (3-speed automatic) D—4-Speed Manual (fully sync.) E—Overdrive *Standard V=Barrel (carb.) SP=Super Premium

CHARLIE HILLARD, Inc.
Your Ford DEALER
 1400 S. University-Ft. Worth, Texas ED 6-9811

PRODUCTS OF



MOTOR COMPANY

Best Year Yet To Go Ford!

1965 FORD/MERCURY

FORD

CUSTOM SIX SERIES

MODEL #	BODY/STYLE #	BODY TYPE	FACTORY PRICE	SHIPPING WEIGHT	PRODUCTION TOTAL
V	54	4-DR SED	2366	3350	*
V	62	2-DR SED	2313	3278	*

CUSTOM V-8 SERIES

N/A	54	4-DR SED	2472	3400	96,393
N/A	62	2-DR SED	2420	3328	49,034

CUSTOM 500 SIX SERIES

V	54B	4-DR SED	2467	3380	*
V	62B	2-DR SED	2414	3308	*

CUSTOM 500 V-8 SERIES

N/A	54B	4-DR SED	2573	3430	71,727
N/A	62B	2-DR SED	2520	3358	19,603

GALAXIE 500 SIX SERIES

V	54A	4-DR SED	2623	3412	*
V	57B	4-DR HT	2708	3452	*
V	63B	2-DR HT	2630	3352	*
V	76A	2-DR CONV	2889	3556	*

GALAXIE 500 V-8 SERIES

N/A	54A	4-DR SED	2730	3462	181,183
N/A	57B	4-DR HT	2815	3502	49,982
N/A	63B	2-DR HT	2737	3402	157,284
N/A	76A	2-DR CONV	2996	3616	31,930

GALAXIE 500XL SERIES

N/A	63C	2-DR HT	3167	3507	28,141
N/A	76B	2-DR CONV	3426	3675	9,849

GALAXIE 500 LTD SERIES

N/A	57F	4-DR HT	3245	3588	68,038
N/A	63F	2-DR HT	3167	3496	37,691

* SIX CYLINDER NUMBERS INCLUDED IN V-8 NUMBERS

**1965
FORD/MERCURY**

STATION WAGON SIX SERIES

MODEL #	BODY/STYLE #	BODY TYPE	FACTORY PRICE	SHIPPING WEIGHT	PRODUCTION TOTAL
V	71D	4-DR RAN WAG-6	2707	3841	*
V	71B	4-DR CTY SED-6	2797	3851	*
V	71C	4-DR CTY SED-10	2899	3865	*
V	71E	4-DR CTY SQ-6	3041	3895	*
V	71A	4-DR CTY SQ-10	3109	3909	*

STATION WAGON V-8 SERIES

N/A	71D	4-DR RAN WAG-6	2813	3891	30,817
N/A	71B	4-DR CTY SED-6	2904	3901	59,693
N/A	71C	4-DR CTY SED-10	3005	3915	32,344
N/A	71E	4-DR CTY SQ-6	3147	3845	24,308
N/A	71A	4-DR CTY SQ-10	3216	3959	30,502

* SIX CYLINDER NUMBERS INCLUDED WITH V-8 NUMBERS

MERCURY

MONTEREY SERIES

N/A	44	4-DR SED	2782	3853	23,363
N/A	43	2-DR SED	2711	3788	5,775
N/A	47	2-DR HT FSBK	2843	3823	16,857
N/A	42	4-DR BRZWAY	2845	3898	19,569
N/A	48	4-DR HT FSBK	2918	3893	10,047
N/A	45	2-DR CONV	3165	3928	4,762

MONTCLAIR SERIES

N/A	52	4-DR BRZWAY	3074	3933	18,924
N/A	58	4-DR HT FSBK	3145	3928	16,977
N/A	57	2-DR HT FSBK	3072	3848	9,645

PARK LANE SERIES

N/A	62	4-DR BRZWAY	3301	3988	8,335
N/A	68	4-DR HT FSBK	3372	3983	14,211
N/A	67	2-DR HT FSBK	3299	3908	6,853
N/A	65	2-DR CONV	3526	4013	3,008

STATION WAGON SERIES

N/A	72	4-DR COMM-6	3169	4178	8,081
N/A	76	4-DR COL PK-6	3364	4213	15,294

1965 MUSTANG

IN 1965 A 2 + 2 FASTBACK BODY STYLE JOINED THE HARDTOP AND CONVERTIBLE TO CREATE AN EXPANDED STABLE OF THREE PONY CARS.

THE MOST SIGNIFICANT CHANGE FOR 1965 WAS THE USE OF AN ALTERNATOR IN THE PLACE OF THE PREVIOUSLY USED GENERATOR. ENGINE CHOICES REMAINED THE SAME AS IN 1964 WITH ONE EXCEPTION. THE 170-CID SIX CYLINDER WAS REPLACED WITH A 200-CID VERSION AS THE BASE POWERPLANT. A NUMBER OF SMALL CHANGES AND NEW OPTIONS WERE SEEN ON THE 1965 MODELS.

WHILE INTERIOR DOOR HANDLES ON THE EARLIEST MUSTANGS WERE SECURED BY 'C' TYPE CLIPS, ALLEN SCREW ATTACHMENTS WERE A RUNNING PRODUCTION CHANGE ADOPTED FOR LATER CARS. ALSO, THE SPACING BETWEEN THE LETTERS IN THE LOWER BODY SIDE NAME-PLATES WAS MODIFIED, GIVING THEM A FIVE INCH MEASUREMENT, OR ABOUT ONE QUARTER INCH LONGER THAN BEFORE. THE PUSH DOWN DOOR LOCK BUTTONS WERE CHROME PLATED, IN CONTRAST TO THE 1964 1/2 TYPE, WHICH WERE COLORED TO MATCH THE INTERIOR. FRONT DISC BRAKES WERE ONE NEW OPTION. SO WAS THE GT PACKAGE, RACING STRIPES AS A STANDARD, BUT DELEATABLE ITEM.

THE STANDARD EQUIPMENT LIST FOR 1965 WAS MUCH THE SAME AS BEFORE, INCLUDING HEATER AND DEFROSTER, DUAL SUN VISORS, SPORTS TYPE FRONT BUMPER, FULL WHEEL COVERS, VINYL UPHOLSTERY, SEAT BELTS, PADDED INSTRUMENT PANEL, AUTOMATIC COURTESY LIGHTS, CIGARETTE LIGHTER, FRONT AND REAR CARPETS, FOAM PADDED FRONT BUCKET SEATS, SELF ADJUSTING BRAKES, SPORTS STEERING WHEEL, FIVE 6.50 X 13 FOUR PLY TUBELESS BLACK SIDEWALL TIRES, AND THE 200 CID/120 HP SIX. THE 289 V-8 AND 6.95 X 14 SIZE TIRES WERE STANDARD IN THE MUSTANG V-8 SERIES.

BODY/STYLE NUMBER	BODY TYPE & SEATING	FACTORY PRICE	SHIPPING WEIGHT	PRODUCTION TOTAL
65A(07)	2-DR HT CPE-4P	2372	2465	409,260
63A(09)	2-DR FSBK CPE-4P	2589	2515	77,079
76A(08)	2-DR CONV-4P	2614	2650	73,112

1965 MUSTANG

OPTIONS

ACCENT GROUP, HT AND CONV. 27.70, FASTBACK 14.20
FORD A/C 283.20
HEAVY DUTY BATTERY 7.60
FRONT DISC BRAKES WITH V-8 AND MANUAL BRAKES ONLY 58.00
FULL LENGTH CENTER CONSOLE 51.50
CONSOLE FOR USE WITH A/C 32.20
EQUA-LOCK LIMITED SLIP DIFFERENTIAL 42.50
CALIFORNIA TYPE CLOSED EMISSION SYSTEM 5.30
CHALLENGER 200-HP V-8 108.00
CHALLENGER FOUR BARREL 225-HP V-8 162.00
CHALLENGER 271-HP HIGH PERFORMANCE V-8 INCLUDING SPECIAL
HANDLING PACKAGE AND 6.95 X 14 NYLON TIRES 442.60
EMERGENCY FLASHERS 19.60
TINTED GLASS WITH BANDED WINDSHIELD 30.90
TINTED-BANDED WINDSHIELD GLASS 21.55
BACK UP LIGHTS 10.70
ROCKER PANEL MOULDINGS, EXCEPT FASTBACK COUPE 16.10
POWER BRAKES 43.20
POWER STEERING 86.30
POWER CONVERTIBLE TOP 54.10
PUSH BUTTON RADIO WITH ANTENNA 58.50
RALLY PAC WITH INSTRUMENTATION WITH CLOCK AND TACHOMETER 70.80
DELUXE RETRACTABLE FRONT SEAT SAFETY BELTS 7.55
SPECIAL HANDLING PACKAGE, WITH 200-HP OR 225-HP V-8S 31.30
PADDED SUN VISORS 5.70
CRUISE-O-MATIC AUTOMATIC TRANSMISSION, WITH SIX 179.80
CRUISE-O-MATIC AUTOMATIC TRANSMISSION, WITH 200-HP AND 225-HP
V-8S 189.60
FOUR SPEED MANUAL TRANSMISSION, WITH SIX 115.90, WITH V-8 188.00
VINYL ROOF, ON 2-DR HT ONLY 75.80
VISIBILITY GROUP, INCLUDES REMOTE CONTROL OUTSIDE REARVIEW MIRROR,
DAY/NITE INSIDE REARVIEW MIRROR, TWO SPEED ELECTRIC WIPERS AND
WINDSHIELD WASHERS 36.00
WHEEL COVERS WITH KNOCK OFF HUBS 18.20
FOURTEEN INCH WIRE WHEEL COVERS 45.80
FOURTEEN INCH STYLED STEEL WHEELS 122.30

1965 COMET

COMET 202 SERIES

MODEL #	BODY/STYLE #	BODY TYPE	FACTORY PRICE	SHIPPING WEIGHT	PROD. TOT.
202	01	4-DR SED	2163	2335	23,501
202	02	2-DR SED	2108	2295	32,425
202	32	4-DR STA WAG	2438	2495	4,814

COMET 404 SERIES

404	11	4-DR SED	2248	2340	18,628
404	12	2-DR SED	2193	2305	10,900
404	34	4-DR STA WAG	2523	2500	5,226
404	36	4-DR VILL STA WAG	2703	2500	1,592

CALIENTE SERIES

N/A	22	4-DR SED	2327	2370	20,337
N/A	23	2-DR HT CPE	2352	2395	29,247
N/A	25	2-DR CONV	2607	2588	6,035

CYCLONE SERIES

N/A	27	2-DR HT CPE	2625	2994	12,347
-----	----	-------------	------	------	--------

1965 FALCON FAIRLANE

FAIRLANE SERIES - 6-CYL/V-8

THIS WAS THE BASE LEVEL AND INCLUDED CHROME WINDSHIELD AND REAR WINDOW MOLDINGS, CHROME HORN RING, FRONT AND REAR ARMRESTS, CIGARETTE LIGHTER, VINYL COATED RUBBER FLOOR MATS, AND THE FAIRLANE NAME IN BLOCK LETTERS AT THE FRONT OF THE FRONT FENDERS.

THE 1965 MODEL WAS LONGER AND WIDER THAN PREVIOUS YEARS, MARKING THE FIRST MAJOR STYLING CHANGES SINCE ITS INTRODUCTION IN 1962.

FAIRLANE SIX SERIES

MODEL #	BODY/STYLE #	BODY TYPE	FACTORY PRICE	SHIPPING WEIGHT	PROD. TOT.
T	54A	4-DR SED	2223	2858	*
T	62A	2-DR SED	2183	2806	*
T	71D	4-DR STA WAG	2512	3183	*

FAIRLANE V-8 SERIES

N/A	54A	4-DR SED	2329	3055	25,376
N/A	62A	2-DR SED	2288	2998	13,685
N/A	71D	4-DR STA WAG	2618	3375	13,911

* SIX CYLINDER NUMBERS INCLUDED IN V-8 NUMBERS.

FAIRLANE 500 SERIES - 6-CYL/V-8

THIS WAS THE TOP LEVEL FAIRLANE AND FEATURED CHROME WINDOW MOLDINGS, A CHROME HORN RING, AND FRONT AND REAR ARMRESTS.

1965 FALCON FAIRLANE

FAIRLANE 500 SIX SERIES

MODEL #	BODY/STYLE #	BODY TYPE	FACTORY PRICE	SHIPPING WEIGHT	PROD. TOT.
T	54B	4-DR SED	2303	2863	*
T	62B	2-DR SED	2263	2806	*
T	65A	2-DR HT	2327	2877	*
T	65B	2-DR SPT CPE	2484	2888	*
T	71B	4-DR STA WAG	2592	3220	*

FAIRLANE 500 V-8 SERIES

N/A	54B	4-DR SED	2409	3055	77,836
N/A	62B	2-DR SED	2369	2997	16,092
N/A	65A	2-DR HT	2432	3069	41,405
N/A	65B	2-DR SPT CPE	2590	3080	15,141
N/A	71B	4-DR STA WAG	2697	3412	20,506

* SIX CYLINDER NUMBERS INCLUDED IN V-8 NUMBERS

FALCON SERIES - 6-CYL/V-8

THIS WAS THE BASE MODEL AND INCLUDED CHROME WINDSHIELD AND REAR WINDOW MOLDINGS, TWO HORNS, TWO SUN VISORS, ARMRESTS ON THE FRONT DOORS ONLY, AND A HORN BUTTON INSTEAD OF A CHROME RING.

FALCON SERIES

MODEL #	BODY/STYLE #	BODY TYPE	FACTORY PRICE	SHIPPING WEIGHT	PROD. TOT.
N/A	54A	4-DR SED	2038	2410	30,186
N/A	62A	2-DR SED	1977	2370	35,858

FUTURA SERIES - 6-CYL/V-8

THIS WAS THE TOP LEVEL FALCON AND INCLUDED A CHROME HORN RING, ARMRESTS FRONT AND REAR, ASHTRAYS, TWO HORNS, FUTURA WHEEL COVERS, A CHROME HOOD ORNAMENT, FUTURA SYMBOL ON THE FRONT FENDER BEHIND THE WHEEL WELL, CHROME WINDSHIELD, REAR WINDOW AND SIDE WINDOW MOLDINGS.

1965 FALCON FAIRLANE

FUTURA SERIES

MODEL #	BODY/STYLE #	BODY TYPE	FACTORY PRICE	SHIPPING WEIGHT	PROD TOT.
N/A	54B	4-DR SED	2146	2410	33,985
N/A	62B	2-DR SED	2099	2375	11,670
N/A	63B	2-DR HT	2179	2395	24,451
N/A	65B	2-DR SPT CPE	2226	2380	1,303
N/A	76A	2-DR CONV	2428	2675	6,191
N/A	76B	2-DR CONV	2481	2660	124

SPRINT V-8 SUBSERIES

N/A	63D	2-DR HT	2425	2813	2,806
N/A	76D	2-DR CONV	2660	3008	300

FALCON STATION WAGON SERIES

N/A	71A	4-DR STA WAG	2317	2680	14,911
N/A	59A	2-DR STA WAG	2284	2640	4,891
N/A	71B	4-DR FUTURA WAG	2453	2670	12,548
N/A	71C	4-DR SQ WAG	2608	2695	6,703

AVAILABLE OPTIONS – FAIRLANE

◆ 289 CID V-8	108.00
◆ HIGH PERFORMANCE 289 CID V-8	430.00
◆ CRUISE-O-MATIC	190.00
◆ 4-SPEED MANUAL TRANSMISSION	188.00
◆ AM RADIO	58.00
◆ POWER STEERING	86.00
◆ POWER TAILGATE WINDOW	32.00
◆ LUGGAGE RACK	45.00
◆ TWO TONE PAINT	22.00
◆ WHITE SIDEWALL TIRES	34.00
◆ WHEEL COVERS	22.00
◆ VINYL ROOF – 2-DR HT	76.00

AVAILABLE OPTIONS – FALCON

◆ 200 CID 6-CYLINDER	45.00
◆ 289 CID V-8	153.00

1965 FALCON FAIRLANE

AVAILABLE OPTIONS – FALCON

◆ CRUISE-O-MATIC WITH V-8	182.00
◆ CRUISE-O-MATIC WITH 6-CYL	172.00
◆ FRONT BUCKET SEATS	69.00
◆ AM RADIO	58.00
◆ WHITE SIDE WALL TIRES	30.00
◆ TWO TONE PAINT	19.00
◆ SPRINT PACKAGE ON HARDTOP	222.00
◆ SPRINT PACKAGE ON CONVERTIBLES	273.00
◆ POWER TAILGATE WINDOW	30.00
◆ LUGGAGE RACK	45.00

1965 FORD- FAIRLANE-FALCON-THUNDERBIRD

1965 FORD

FORD OFFERED THE WIDEST CHOICE OF MODELS FOR 1965 IN THEIR HISTORY WITH 44. LUXURY AND COMFORT WERE FEATURED ON THE FULL SIZE FORDS, WHICH USED REAR COIL SPRINGS FOR THE FIRST TIME AND FEATURED NEW INTERIOR STYLING. SILENT FLOW VENTILATION SYSTEMS WERE STANDARD ON FOUR DOOR HARDTOPS. THE GALAXIE 500 LTD INTERIOR TRIM OPTIONS WERE OFFERED FOR THE FIRST TIME ON TWO AND FOUR DOOR HARDTOPS.

FORD CUSTOM SERIES - 6-CYL/V-8

THIS WAS THE BASE MODEL AND INCLUDED CHROME WINDSHIELD AND REAR WINDOW MOLDINGS, TWO SUN VISORS, A CHROME HORN RING, ARMRESTS ON ALL DOORS, AND THE "CUSTOM" NAME ON THE FRONT FENDER.

CUSTOM SIX SERIES

MODEL #	BODY/STYLE #	BODY TYPE	FACTORY PRICE	SHIPPING WEIGHT	PROD. TOT.
V	54	4-DR SED	2366	3350	*
V	62	2-DR SED	2313	3278	*

CUSTOM V-8 SERIES

N/A	54	4-DR SED	2472	3400	96,393
N/A	62	2-DR SED	2420	3328	49,034

* SIX CYLINDER NUMBERS ARE INCLUDED IN V-8 NUMBERS.

CUSTOM 500 SERIES - 6-CYL/V-8

THIS WAS THE UPPER LEVEL CUSTOM SERIES MODEL AND INCLUDED CHROME WINDSHIELD AND REAR WINDOW MOLDINGS, NYLON CARPETING, ARMRESTS WITH ASHTRAYS, TWO SUN VISORS, AND ALL THE TRIM USED IN THE CUSTOM MODELS.

CUSTOM SIX SERIES

MODEL #	BODY/STYLE #	BODY TYPE	FACTORY PRICE	SHIPPING WEIGHT	PROD. TOT.
V	54B	4-DR SED	2467	3380	*
V	62B	2-DR SED	2414	3308	*

1965 FORD- FAIRLANE-FALCON-THUNDERBIRD

CUSTOM 500 V-8 SERIES

MODEL #	BODY/STYLE #	BODY TYPE	FACTORY PRICE	SHIPPING WEIGHT	PROD. TOT.
N/A	54B	4-DR SED	2573	3430	71,727
N/A	62B	2-DR SED	2520	3358	19,603

* SIX CYLINDER NUMBERS INCLUDED IN V-8 NUMBERS.

GALAXIE 500 SERIES - 6-CYL/V-8

THE GALAXIE 500 WAS THE INTERMEDIATE LEVEL AND INCLUDED ALL THE STANDARD CUSTOM FEATURES PLUS A CHROME HOOD ORNAMENT, FORD CREST IN THE CENTER OF THE TRUNK LID, CHROME WINDOW FRAMES, THE FORD CREST ON THE ROOF "C" PILLARS, GALAXIE 500 IN BLOCK LETTERS AT THE FRONT OF THE FRONT FENDERS, CHROME ROCKER PANEL TRIM, AND BACK UP LIGHTS.

GALAXIE 500 SIX SERIES

MODEL #	BODY/STYLE #	BODY TYPE	FACTORY PRICE	SHIPPING WEIGHT	PROD. TOT.
V	54A	4-DR SED	2623	3412	*
V	57B	4-DR HT	2708	3452	*
V	63B	2-DR HT	2630	3352	*
V	76A	2-DR CONV	2889	3556	*

GALAXIE 500 V-8 SERIES

N/A	54A	4-DR SED	2730	3462	181,183
N/A	57B	4-DR HT	2815	3502	49,982
N/A	63B	2-DR HT	2737	3402	157,284
N/A	76A	2-DR CONV	2996	3616	31,930

* SIX CYLINDER NUMBERS ARE INCLUDED IN V-8 NUMBERS.

1965 FORD- FAIRLANE-FALCON-THUNDERBIRD

GALAXIE 500XL SERIES - V-8

GALAXIE 500XL WAS THE SPORT VERSION OF THE GALAXIE 500. IT CAME IN TWO DOOR HARDTOP AND CONVERTIBLE MODELS. IT INCLUDED ALL GALAXIE 500 TRIM PLUS BUCKET SEATS AND FLOOR MOUNTED SHIFT, POLISHED DOOR TRIM PANELS WITH LOWER DOOR PANEL CARPETING, DUAL LENS COURTESY/WARNING LAMPS IN THE DOOR PANELS, REAR READING LIGHTS IN THE HARDTOPS, AND GALAXIE 500XL BADGES ON THE BODY EXTERIOR. THE 289CID/200HP V-8 AND CRUISE-O-MATIC TRANSMISSION WERE STANDARD IN THE XL.

GALAXIE 500XL SERIES

MODEL #	BODY/STYLE #	BODY TYPE	FACTORY PRICE	SHIPPING WEIGHT	PROD. TOT.
N/A	63C	2-DR HT	3167	3507	28,141
N/A	76B	2-DR CONV	3426	3675	9,849

GALAXIE 500 LTD SERIES - V-8

THIS WAS THE NEW TOP LEVEL FORD FOR 1965 AND INCLUDED ALL STANDARD GALAXIE 500 FEATURES PLUS A 289 CID/200 HP V-8, CRUISE-O-MATIC AUTOMATIC TRANSMISSION, THICK PADDED SEATS, SIMULATED WALNUT APPLIQUES ON THE LOWER EDGE OF THE INSTRUMENT PANEL, GABARDINE FINISH HEADLINING AND SUN VISORS, FRONT AND REAR DOOR COURTESY/WARNING LIGHTS, COURTESY LIGHTS IN THE REAR ROOF PILLARS AND UNDER THE INSTRUMENT PANEL, GLOVEBOX AND ASHTRAY LIGHTS, AND A SELF REGULATING CLOCK.

GALAXIE 500 LTD SERIES

MODEL #	BODY/STYLE #	BODY TYPE	FACTORY PRICE	SHIPPING WEIGHT	PROD. TOT.
N/A	57F	4-DR HT	3245	3588	68,038
N/A	63F	2-DR HT	3167	3496	37,691

1965 FORD- FAIRLANE-FALCON-THUNDERBIRD

STATION WAGON SERIES - 6-CYL/V-8

THE RANCH WAGON WAS THE BASE MODEL, THE COUNTRY SEDAN THE INTERMEDIATE, AND THE COUNTRY SQUIRE THE TOP LEVEL. THIS PARALLELED THE PASSENGER CAR SERIES CUSTOM 500, GALAXIE 500, AND THE GALAXIE 500 LTD.

STATION WAGON SIX SERIES

MODEL #	BODY/STYLE #	BODY TYPE	FACTORY PRICE	SHIPPING WEIGHT	PROD. TOT.
V	71D	4-DR RAN WAG	2707	3841	*
V	71B	4-DR CTY SED	2797	3851	*
V	71C	4-DR CTY SED	2899	3865	*
V	71E	4-DR CTY SQ	3041	3895	*
V	71A	4-DR CTY SQ	3109	3909	*

STATION WAGON V-8 SERIES

N/A	71D	4-DR RAN WAG	2813	3891	30,817
N/A	71B	4-DR CTY SED	2904	3901	59,693
N/A	71C	4-DR CTY SED	3005	3915	32,344
N/A	71E	4-DR CTY SQ	3147	3945	24,308
N/A	71A	4-DR CTY SQ	3216	3959	30,502

* SIX CYLINDER NUMBERS INCLUDED WITH V-8 NUMBERS.

FAIRLANE SERIES - 6-CYL/V-8

THIS WAS THE BASE MODEL IN THE SERIES AND INCLUDED CHROME WINDSHIELD AND REAR WINDOW MOLDINGS, CHROME HORN RING, FRONT AND REAR ARMRESTS, CIGARETTE LIGHTER, VINYL COATED RUBBER FLOOR MATS.

FAIRLANE SIX SERIES

MODEL #	BODY/STYLE #	BODY TYPE	FACTORY PRICE	SHIPPING WEIGHT	PROD. TOT.
T	54A	4-DR SED	2223	2858	*
T	62A	2-DR SED	2183	2806	*
T	71D	4-DR STA WAG	2512	3183	*

FAIRLANE V-8 SERIES

N/A	54A	4-DR SED	2329	3055	25,376
N/A	62A	2-DR SED	2288	2998	13,685
N/A	71D	4-DR STA WAG	2618	3375	13,911

* SIX CYLINDER NUMBERS INCLUDED IN V-8 NUMBERS.

1965 FORD- FAIRLANE-FALCON-THUNDERBIRD

FAIRLANE 500 SERIES - 6-CYL/V-8

THIS WAS THE TOP FAIRLANE MODEL AND INCLUDED CHROME WINDOW MOLDING, A CHROME HORN RING, FRONT AND REAR ARMRESTS, A FORD CREST ON THE ROOF "C" PILLAR, A CHROME HOOD ORNAMENT, AND A SINGLE HORIZONTAL CHROME STRIP WITH AN ALUMINUM INSERT. THE FAIRLANE 500 USED CARPET INSTEAD OF VINYL FLOOR MATS.

FAIRLANE 500 SIX SERIES

MODEL #	BODY/STYLE #	BODY TYPE	FACTORY PRICE	SHIPPING WEIGHT	PROD. TOT.
T	54B	4-DR SED	2303	2863	*
T	62B	2-DR SED	2263	2806	*
T	65A	2-DR HT	2327	2877	*
T	65B	2-DR SPT CPE	2484	2888	*
T	71B	4-DR STA WAG	2592	3220	*

FAIRLANE 500 V-8 SERIES

N/A	54B	4-DR SED	2409	3055	77,836
N/A	62B	2-DR SED	2369	2997	16,092
N/A	65A	2-DR HT	2432	3069	41,405
N/A	65B	2-DR SPT CPE	2590	3080	15,141
N/A	71B	4-DR STA WAG	2697	3412	20,506

* SIX CYLINDER NUMBERS INCLUDED IN V-8 NUMBERS.

FALCON SERIES - 6-CYL/V-8

THIS WAS THE BASE MODEL AND INCLUDED CHROME WINDSHIELD AND REAR WINDOW MOLDING, TWO HORNS, TWO SUN VISORS, ARMRESTS ON THE FRONT DOORS ONLY, AND A HORN BUTTON INSTEAD OF A RING.

FALCON SERIES

MODEL #	BODY/STYLE #	BODY TYPE	FACTORY PRICE	SHIPPING WEIGHT	PROD. TOT.
N/A	54A	4-DR SED	2038	2410	30,186
N/A	62A	2-DR SED	1977	2370	35,858

1965 FORD- FAIRLANE-FALCON-THUNDERBIRD

FALCON FUTURA - 6-CYL/V-8

THIS WAS THE TOP LEVEL FALCON MODEL AND INCLUDED A CHROME HORN RING, ARMRESTS FRONT AND REAR, WITH ASHTRAYS, TWO HORNS, FUTURA WHEEL COVERS, A CHROME HOOD ORNAMENT, FUTURA SYMBOL ON THE FRONT FENDER BEHIND THE WHEEL WELL, CHROME WINDSHIELD AND REAR WINDOW MOLDING, AND SIDE WINDOW MOLDING, A FULL LENGTH SPEAR TYPE EXTERIOR CHROME MOLDING, WITH EITHER RED, WHITE OR BLACK PAINTED INSERT.

FUTURA SERIES

MODEL #	BODY/STYLE #	BODY TYPE	FACTORY PRICE	SHIPPING WEIGHT	PROD. TOT.
N/A	54B	4-DR SED	2146	2410	33,985
N/A	62B	2-DR SED	2099	2375	11,670
N/A	63B	2-DR HT	2179	2395	24,451
N/A	65B	2-DR SPT CPE	2226	2380	1,303
N/A	76A	2-DR CONV	2428	2675	6,191
N/A	76B	2-DR CONV	2481	2660	124
SPRINT V-8 SUBSERIES					
N/A	63D	2-DR SPR HT	2425	2813	2,806
N/A	76D	2-DR SPR CONV	2660	3008	300

FALCON STATION WAGON SERIES - 6-CYL/V-8

THE FALCON WAS THE BASE MODEL, FUTURA THE INTERMEDIATE MODEL, AND THE SQUIRE THE TOP LEVEL.

FALCON STATION WAGON SERIES

MODEL #	BODY/STYLE #	BODY TYPE	FACTORY PRICE	SHIPPING WEIGHT	PROD. TOT.
N/A	71A	4-DR STA WAG	2317	2680	14,911
N/A	59A	2-DR STA WAG	2284	2640	4,891
N/A	71B	4-DR FUT WAG	2453	2670	12,548
N/A	71C	4-DR SQ WAG	2608	2695	6,703

1965 FORD- FAIRLANE-FALCON-THUNDERBIRD

THUNDERBIRD SERIES - V-8

THE 1965 MODEL THUNDERBIRD WAS BASICALLY STYLED THE SAME AS THE 1964 MODEL. DISC BRAKES AND SEQUENTIAL TURN SIGNALS WERE ADDED TO THE 1965 THUNDERBIRD. ALSO REVERSIBLE KEYS AND KEYLESS LOCKING SYSTEM. ALSO AVAILABLE WAS VACUUM OPERATED POWER DOOR LOCKS INTRODUCED AS PART OF AN OPTIONAL SAFETY GROUP IN 1964. ALSO INTRODUCED WAS A REMOTE TRUNK RELEASE. A SPECIAL LANDAU VERSION WAS OFFERED AND FEATURED PARCHMENT COLORED VINYL INTERIOR AND VINYL TOP WITH EITHER A SPECIAL WHITE OR "EMBERGLO" (COPPER) EXTERIOR FINISH.

THUNDERBIRD SERIES

MODEL #	BODY/STYLE #	BODY TYPE	FACTORY PRICE	SHIPPING WEIGHT	PROD. TOT.
Z	63A	2-DR HT	4394	4470	42,652
Z	63B	2-DR LANDAU	4495	4478	25,474
Z	76A	2-DR CONV	4851	4588	6,846

AVAILABLE FORD OPTIONS

289 CID V-8	109.00
CRUISE-O-MATIC	189.00
POWER STEERING	97.00
AM RADIO	58.00
WHEEL COVERS	25.00
WHITE SIDEWALL TIRES	34.00
390 CID V-8	246.00
FOUR SPEED MANUAL TRANSMISSION	188.00
POWER BRAKES	43.00
POWER WINDOWS	102.00
TINTED WINDSHIELD	40.00
AIR CONDITIONING	360.00
VINYL ROOF	76.00
AM/FM RADIO	72.00
POWER TAILGATE WINDOW	32.00
LUGGAGE RACK-STATION WAGON	45.00

1965 FORD- FAIRLANE-FALCON-THUNDERBIRD

FAIRLANE OPTIONS

289 CID V-8	108.00
HIGH PERFORMANCE 289 CID V-8	430.00
CRUISE-O-MATIC	190.00
FOUR SPEED MANUAL TRANSMISSION	188.00
AM RADIO	58.00
POWER STEERING	86.00
POWER TAILGATE WINDOW	32.00
LUGGAGE RACK-STATION WAGON	45.00
TWO TONE PAINT	22.00
WHITE SIDEWALL TIRES	34.00
WHEEL COVERS	22.00
VINYL ROOF ON TWO DOOR HARDTOPS	76.00

FALCON OPTIONS

200-CID 6-CYL	45.00
289 CID V-8	153.00
CRUISE-O-MATIC	182 OR 172
FRONT BUCKET SEATS	69.00
AM RADIO	58.00
TWO TONE PAINT	19.00
WHITE SIDEWALL TIRES	30.00
SPRINT PACKAGE-HARDTOP	222.00
SPRINT PACKAGE-CONVERTIBLE	273.00

THUNDERBIRD OPTIONS

AIR CONDITIONING	425.00
TINTED WINDOWS	43.00
LEATHER SEATS	106.00
POWER SEATS	184.00
POWER WINDOWS	106.00
AM/FM RADIO	84.00
WHITE SIDEWALL TIRES	44.00
VACUUM TRUNK RELEASE	13.00
DELUXE WHEEL COVERS	16.00