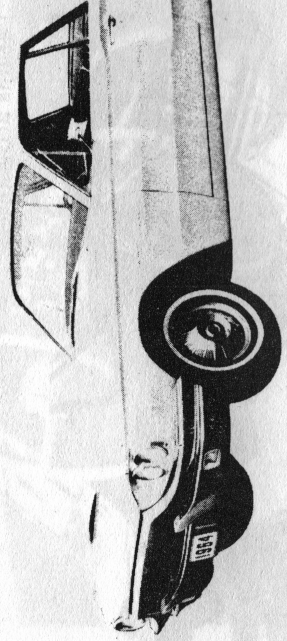


THUNDERBIRD HARDTOP, LANDAU AND CONVERTIBLE

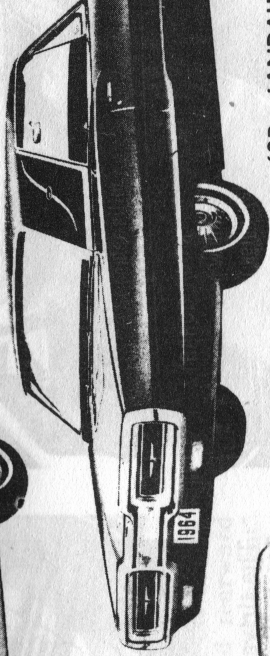
Wheelbase	113.2"
Tread—Front	61.0"
—Rear	60.0"
Length—Overall	205.4"
Width—Overall	77.1"
Height—Overall—Hardtop and Landau	52.5"
—Convertible	53.3"
Usable Luggage Capacity—	
Hardtop and Landau	11.5 cu ft
Convertible (top up)	6.1 cu ft

MAJOR SPECIFICATIONS

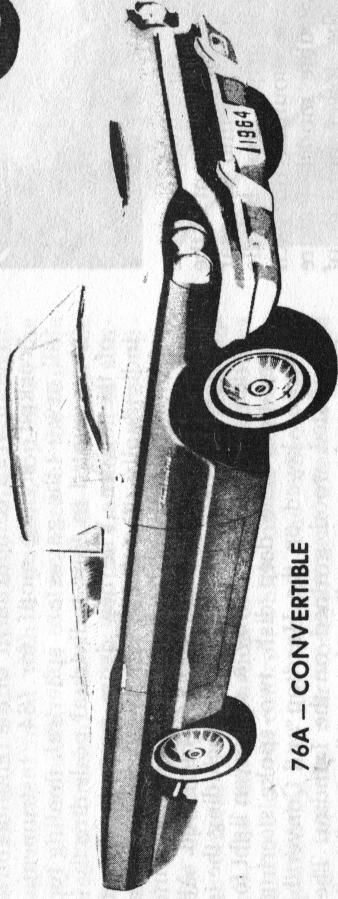
Front Compartment Dimensions—	
Effective Head Room—Hardtop and Landau	37.4"
—Convertible	39.1"
Maximum Effective Leg Room	39.7"
Hip Room	59.7"
Shoulder Room	57.0"
Curb Weight—63A	4605 lbs
—63B	4615 lbs
—76A	4760 lbs



63A — HARDTOP



63B — LANDAU



76A — CONVERTIBLE

EXTERIOR STYLING

Completely restyled for 1964, Thunderbird now has a longer hood and a shorter roof line; and there is no sacrifice of interior roominess. The all-new body side panels are highly sculptured; and the entire car is designed to make available more new conveniences and more comfort to keep Thunderbird one of a kind in the luxury car class.

The front end of the 1964 Thunderbird is all new with a more forceful power dome and headlamps that are wider-spaced; and the bumper and grille are designed to provide a faster, more aerodynamic appearance.

The rear of the '64 Thunderbird features new rectangular taillights set within the massive rear bumper. A die-cast bright-metal grille for the new Silent-Flo ventilation system is used below the rear window of both the Hardtop and Landau.

HARDTOP—The 1964 Thunderbird Hardtop continues with the image of swift-lined sleekness that is Thunderbird tradition. Styling refinements with intended functional purposes, in addition to their smart

appearance, make Thunderbird *the* luxury car of the year. Side ornamentation of the Hardtop includes "Thunderbird" script identification on the fender, and the Thunderbird emblem on the roof rear pillar. The widely imitated Thunderbird roof line has been restyled with corner creases for a more crisp appearance.

LANDAU—The Thunderbird Landau features a durable fade-resistant padded vinyl top covering over the formal Hardtop roof. The vinyl-covered top is available in black, white, blue, and brown. The traditional Landau "S" bar in bright metal carries the Thunderbird emblem in a newly styled oval at the center of the bar. "Thunderbird" in script lettering appears on the fender.

CONVERTIBLE—The Convertible model of Thunderbird for '64 offers the basic features of the Hardtop and Landau, but with the added attraction of an all-vinyl, wrinkle-resistant soft top. The electro-hydraulic-operated top lowers and retracts under the power-operated rear deck at the driver's desire. The lowered top always presents a sleek appearance because of the absence of a boot over a "stacked" top in a well, as found on conventional convertibles.